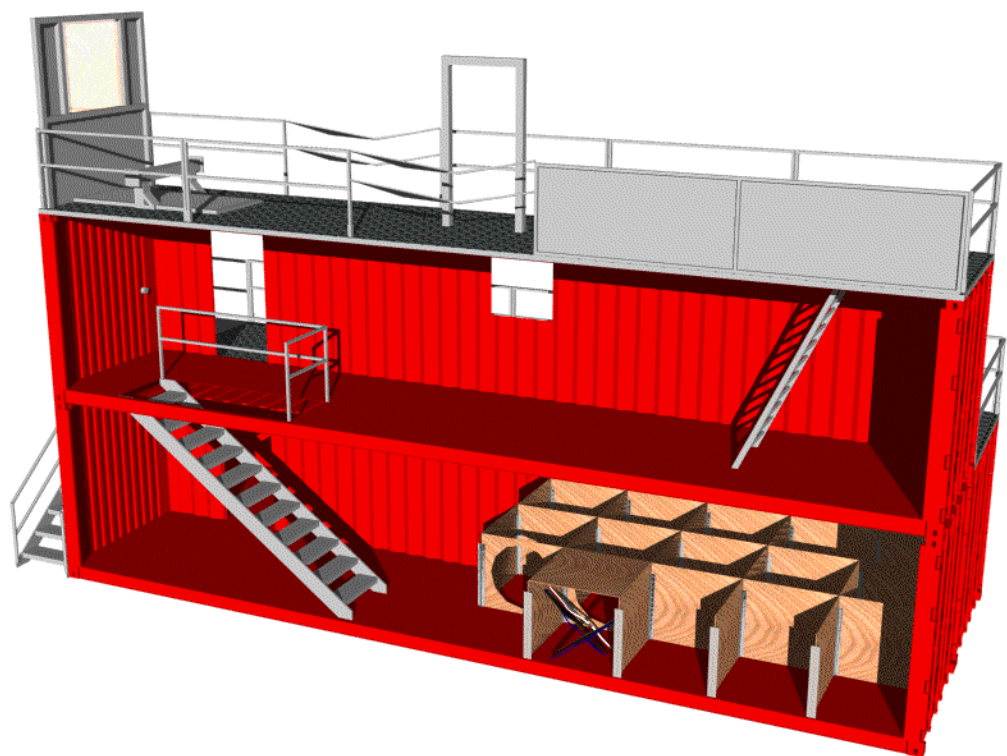
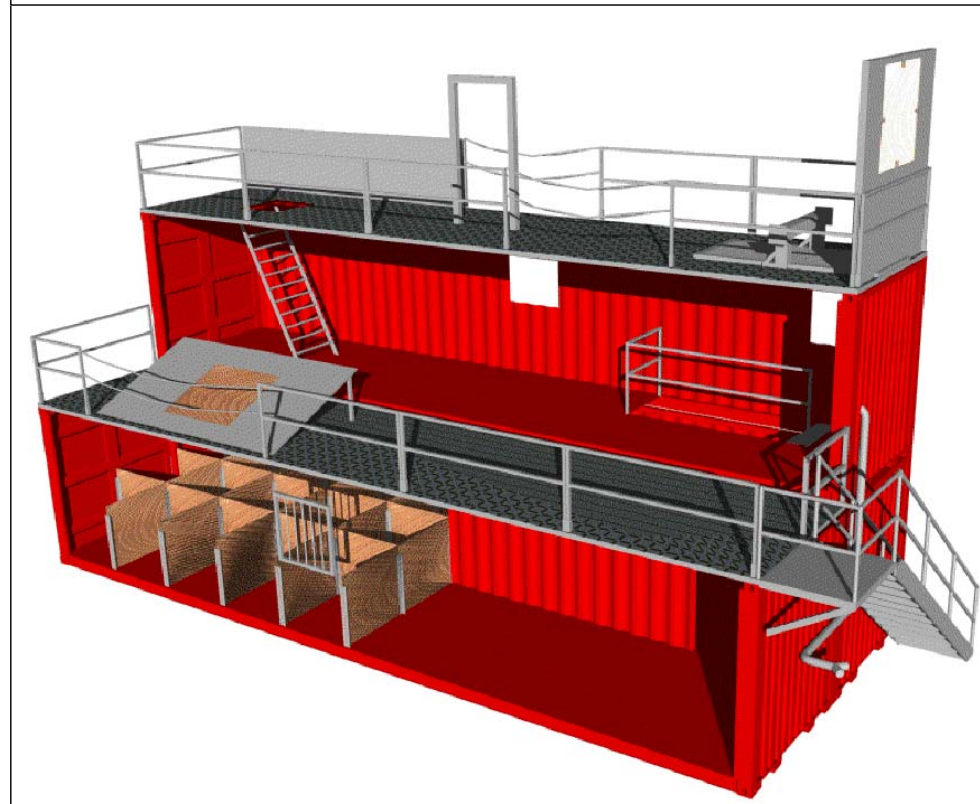
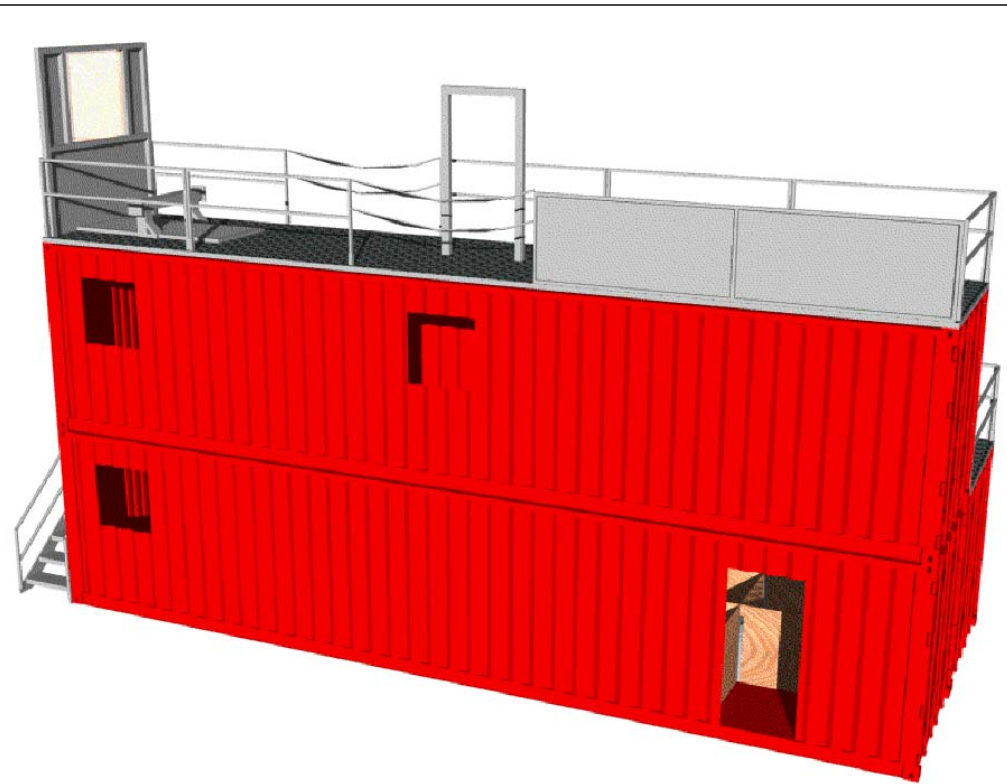


FIRE TRAINING FACILITY #148



UNIT SPECIFICATIONS

- 3 40' H.C. CONTAINERS (NEW)
- 3 TRAINING LEVELS
- 3 DOORS
- 1 FORCED ENTRY DOOR
- 3 WINDOWS
- 1 BURGLAR BAR WINDOW
- 1 DENVER DRILL WINDOW
- 1 ROOF/FLOOR HATCH
- 1 BREACH WALL PROP
- 1 WIRE CHASE PROP
- 1 EXTERIOR STAIR UNIT W/LANDING
- 1 INTERIOR STAIR UNIT
- 1 DROP DOWN LADDER
- 1 TWO LEVEL STANDPIPE
- 9 FLOOR DRAINS
- 1 PARAPET WALL
- 1 PANEL MAZE (15 SECTIONS)
- 1 SIMULATED ROOF CHOP-OUT w/ DRYWALL
POKE-OUT BELOW
- GALVANIZED RAILS & STAIRS
- 1 RAPPEL ANCHOR (LOW)
- 1 RAPPEL ANCHOR (HIGH)
- BAR GRATED ROOFTOPS
- REINFORCEMENT w/ TOEKICK
- 1 BAIL-OUT WINDOW
- ELECTRICAL LIGHTING -INT AND EXT
- FLOOR DRAINS
- 1 SMOKE MACHINE
- COLOR OF CHOICE
- RINO LINED INTERIORS
- TOTAL SQ. FT.
- INTERIOR = 960 SQ.FT.
- EXTERIOR = 640 SQ.FT.

